

Forged Carbon Steel Fittings and Outlets

Specifications

- Forged carbon steel fitting material conforms to ASTM SA105N, NORMALIZED
- Canadian Registration Numbers available at www.smithcooper.com
- Forged carbon steel fitting dimensions conform to ASME B16.11
- Forged carbon steel fitting dimensions listed are either minimums or set by the factory per ASME B16.11 contact SCI for exact dimensional information
- NPT threads on forged steel fittings conform to ASME B1.20.1
- Forged carbon steel socket weld inserts conform to MSS-SP-79
- Forged carbon steel unions conform to MSS-SP-83
- Forged carbon steel outlet fittings conform to MSS-SP-97
- Manufacturing facility is ISO 9001:2008

2000#, 3000# or 6000#

FORGED

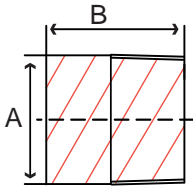


Fig. 42RP3 – Round Head Plug

Size IN	Part Number	A IN	B IN	Master	Weight LB
1/2	42RP3004	0.84	1.75	150	0.2
3/4	42RP3006	1.06	1.75	100	0.4
1	42RP3010	1.31	2.00	80	0.7
1-1/4	42RP3012	1.69	2.00	50	1.2
1-1/2	42RP3014	1.91	2.00	30	1.7
2	42RP3020	2.38	2.50	20	3.2

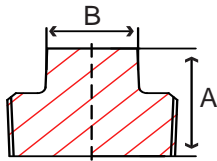


Fig. 42SP3 – Square Head Plug

Size IN	Part Number	A IN	B IN	Master	Weight LB
1/8	42SP3001	0.63	0.28	800	0.02
1/4	42SP3002	0.69	0.38	800	0.02
3/8	42SP3003	0.81	0.44	500	0.06
1/2	42SP3004	0.94	0.56	300	0.1
3/4	42SP3006	1.06	0.62	200	0.2
1	42SP3010	1.25	0.81	150	0.3
1-1/4	42SP3012	1.37	0.94	80	0.5
1-1/2	42SP3014	1.43	1.12	50	0.8
2	42SP3020	1.57	1.31	30	1.3
2-1/2	42SP3024	1.81	1.50	15	2.1
3	42SP3030	1.93	1.69	10	3.3
4	42SP3040	2.25	2.50	3	8.4

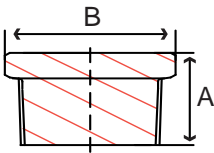


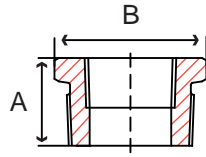
Fig. 42HP3 – Hex Head Plug

Size IN	Part Number	A IN	B IN	Master	Weight LB
1/8	42HP3001	0.63	0.44	800	0.02
1/4	42HP3002	0.69	0.62	800	0.06
3/8	42HP3003	0.81	0.69	600	0.08
1/2	42HP3004	0.87	0.88	250	0.1
3/4	42HP3006	1.00	1.06	150	0.3
1	42HP3010	1.13	1.38	100	0.4
1-1/4	42HP3012	1.37	1.75	35	0.9
1-1/2	42HP3014	1.43	2.00	25	1.3
2	42HP3020	1.57	2.50	20	2.2
2-1/2	42HP3024	1.81	3.00	8	3.9
3	42HP3030	1.93	3.50	6	5.7
4	42HP3040	2.25	4.62	4	11.4

2000#, 3000# or 6000#

FORGED

Fig. 42HB3 – Hex Bushing



Size IN	Part Number	A IN	B IN	Master	Weight LB
1/4 x 1/8	42HB3002001	0.56	0.62	600	0.02
3/8 x 1/8	42HB3003001	0.66	0.69	500	0.02
3/8 x 1/4	42HB3003002	0.66	0.69	500	0.02
1/2 x 1/8	42HB3004001	0.75	0.88	400	0.06
1/2 x 1/4	42HB3004002	0.75	0.88	400	0.06
1/2 x 3/8	42HB3004003	0.75	0.88	400	0.06
3/4 x 1/8	42HB3006001	0.84	1.06	200	0.1
3/4 x 1/4	42HB3006002	0.84	1.06	200	0.1
3/4 x 3/8	42HB3006003	0.84	1.06	200	0.1
3/4 x 1/2	42HB3006004	0.84	1.06	200	0.1
1 x 1/8	42HB3010001	1.00	1.38	100	0.2
1 x 1/4	42HB3010002	1.00	1.38	100	0.2
1 x 3/8	42HB3010003	1.00	1.38	100	0.2
1 x 1/2	42HB3010004	1.00	1.38	100	0.2
1 x 3/4	42HB3010006	1.00	1.38	100	0.2
1-1/4 x 1/8	42HB3012001	1.09	1.75	70	0.8
1-1/4 x 1/4	42HB3012002	1.09	1.75	70	0.3
1-1/4 x 3/8	42HB3012003	1.09	1.75	70	0.3
1-1/4 x 1/2	42HB3012004	1.09	1.75	70	0.5
1-1/4 x 3/4	42HB3012006	1.09	1.75	70	0.5
1-1/4 x 1	42HB3012010	1.09	1.75	70	0.5
1-1/2 x 1/8	42HB3014001	1.12	2.00	50	1.3
1-1/2 x 1/4	42HB3014002	1.12	2.00	50	1.3
1-1/2 x 3/8	42HB3014003	1.12	2.00	50	1.3
1-1/2 x 1/2	42HB3014004	1.12	2.00	50	1.0
1-1/2 x 3/4	42HB3014006	1.12	2.00	50	0.8
1-1/2 x 1	42HB3014010	1.12	2.00	50	0.7
1-1/2 x 1-1/4	42HB3014012	1.12	2.00	50	0.7
2 x 1/4	42HB3020002	1.22	2.50	25	0.8
2 x 3/8	42HB3020003	1.22	2.50	25	1.8
2 x 1/2	42HB3020004	1.22	2.50	25	1.7
2 x 3/4	42HB3020006	1.22	2.50	25	1.6
2 x 1	42HB3020010	1.22	2.50	25	1.5
2 x 1-1/4	42HB3020012	1.22	2.50	25	0.9
2 x 1-1/2	42HB3020014	1.22	2.50	25	0.9
2-1/2 x 1/2	42HB3024004	1.44	3.00	15	1.1
2-1/2 x 3/4	42HB3024006	1.44	3.00	15	1.1
2-1/2 x 1	42HB3024010	1.44	3.00	15	1.1
2-1/2 x 1-1/4	42HB3024012	1.44	3.00	15	1.1
2-1/2 x 1-1/2	42HB3024014	1.44	3.00	15	1.3
2-1/2 x 2	42HB3024020	1.44	3.00	15	1.3
3 x 1/4	42HB3030002	1.53	3.50	10	5.3
3 x 1/2	42HB3030004	1.53	3.50	10	5.2
3 x 3/4	42HB3030006	1.53	3.50	10	4.6
3 x 1	42HB3030010	1.53	3.50	10	5.0
3 x 1-1/4	42HB3030012	1.53	3.50	10	3.4
3 x 1-1/2	42HB3030014	1.53	3.50	10	3.1
3 x 2	42HB3030020	1.53	3.50	10	2.7
3 x 2-1/2	42HB3030024	1.53	3.50	10	2.3
4 x 1	42HB3040010	1.75	4.62	5	9.4
4 x 1-1/4	42HB3040012	1.75	4.62	5	8.5
4 x 1-1/2	42HB3040014	1.75	4.62	5	7.6
4 x 2	42HB3040020	1.75	4.62	5	6.7
4 x 2-1/2	42HB3040024	1.75	4.62	5	5.7
4 x 3	42HB3040030	1.75	4.62	5	4.7

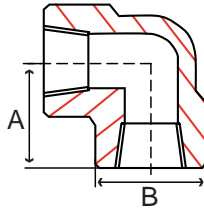


Fig. 42E 2 – 90° Elbow

Size IN	Part Number	A IN	B IN	Master	Weight LB
1/8	42E 2001	0.81	0.88	150	0.2
1/4	42E 2002	0.81	0.88	150	0.2
3/8	42E 2003	0.97	1.00	100	0.3
1/2	42E 2004	1.12	1.31	80	0.5
3/4	42E 2006	1.31	1.50	50	0.7
1	42E 2010	1.50	1.81	30	1.1
1-1/4	42E 2012	1.75	2.19	20	1.8
1-1/2	42E 2014	2.00	2.44	15	2.3
2	42E 2020	2.38	2.97	8	3.7
2-1/2	42E 2024	3.00	3.62	4	6.9
3	42E 2030	3.38	4.31	2	10.0
4	42E 2040	4.19	5.75	1	22.5

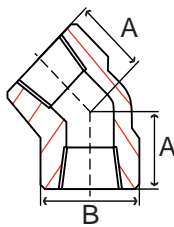


Fig. 42F 2 – 45° Elbow

Size IN	Part Number	A IN	B IN	Master	Weight LB
1/4	42F 2002	0.69	0.88	150	0.2
3/8	42F 2003	0.75	1.00	100	0.2
1/2	42F 2004	0.88	1.31	80	0.4
3/4	42F 2006	1.00	1.50	50	0.5
1	42F 2010	1.12	1.81	30	0.9
1-1/4	42F 2012	1.31	2.19	20	1.4
1-1/2	42F 2014	1.38	2.44	15	1.8
2	42F 2020	1.69	2.97	10	3.1
2-1/2	42F 2024	2.06	3.62	6	7.6
3	42F 2030	2.50	4.31	2	11.9
4	42F 2040	3.12	5.75	2	19.7

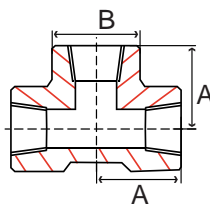


Fig. 42T 2 – Tee

Size IN	Part Number	A IN	B IN	Master	Weight LB
1/4	42T 2002	0.81	0.88	100	0.2
3/8	42T 2003	0.97	1.00	80	0.3
1/2	42T 2004	1.12	1.31	50	0.6
3/4	42T 2006	1.31	1.50	35	0.9
1	42T 2010	1.50	1.81	20	1.5
1-1/4	42T 2012	1.75	2.19	15	2.3
1-1/2	42T 2014	2.00	2.44	10	3.0
2	42T 2020	2.38	2.97	6	4.7
2-1/2	42T 2024	3.00	3.62	3	9.0
3	42T 2030	3.38	4.31	2	13.4
4	42T 2040	4.19	5.75	1	32.4

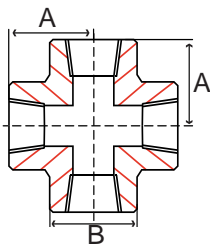
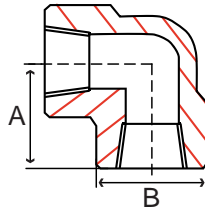


Fig. 42X 2 – Cross

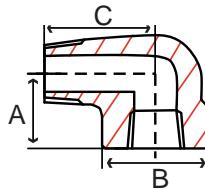
Size IN	Part Number	A IN	B IN	Master	Weight LB
3/8	42X 2003	0.97	1.00	60	0.4
1/2	42X 2004	1.12	1.31	40	0.8
3/4	42X 2006	1.31	1.50	30	1.1
1	42X 2010	1.50	1.81	20	1.6
1-1/4	42X 2012	1.75	2.19	10	2.4
1-1/2	42X 2014	2.00	2.44	6	3.5
2	42X 2020	2.38	2.97	4	5.7
2-1/2	42X 2024	3.00	3.62	3	10.4
3	42X 2030	3.38	4.31	3	15.0

Fig. 42E 3 – 90° Elbow



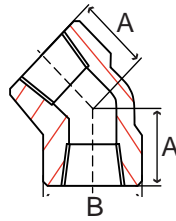
Size IN	Part Number	A IN	B IN	Master	Weight LB
1/8	42E 3001	0.81	0.88	100	0.2
1/4	42E 3002	0.97	1.00	100	0.7
3/8	42E 3003	1.12	1.31	80	0.6
1/2	42E 3004	1.31	1.50	50	0.9
3/4	42E 3006	1.50	1.81	25	1.5
1	42E 3010	1.75	2.19	20	2.2
1-1/4	42E 3012	2.00	2.44	15	3.1
1-1/2	42E 3014	2.38	2.97	6	4.8
2	42E 3020	2.50	3.31	5	5.4
2-1/2	42E 3024	3.25	4.00	2	13.2
3	42E 3030	3.75	4.75	1	19.5
4	42E 3040	4.50	6.00	1	32.7

Fig. 42SE3 – 90° Street Elbow



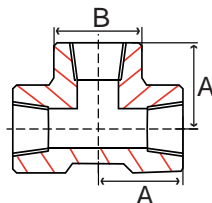
Size IN	Part Number	A IN	B IN	C IN	Master	Weight LB
1/8	42SE3001	0.97	1.00	1.25	200	0.2
1/4	42SE3002	0.97	1.00	1.25	150	0.2
3/8	42SE3003	1.12	1.31	1.50	80	0.4
1/2	42SE3004	1.31	1.50	1.69	50	0.6
3/4	42SE3006	1.50	1.81	1.94	30	1.1
1	42SE3010	1.75	2.19	2.31	20	2.2
1-1/4	42SE3012	2.00	2.44	2.69	15	2.4
1-1/2	42SE3014	2.38	2.97	2.81	8	4.4
2	42SE3020	2.50	3.31	3.38	5	6.4

Fig. 42F 3 – 45° Elbow



Size IN	Part Number	A IN	B IN	Master	Weight LB
1/8	42F 3001	0.66	0.86	100	0.2
1/4	42F 3002	0.75	1.00	100	0.2
3/8	42F 3003	0.88	1.31	80	0.5
1/2	42F 3004	1.00	1.50	50	0.7
3/4	42F 3006	1.12	1.81	30	1.2
1	42F 3010	1.31	2.19	20	2.0
1-1/4	42F 3012	1.38	2.44	15	2.2
1-1/2	42F 3014	1.69	2.97	8	4.5
2	42F 3020	1.72	3.31	6	4.9
2-1/2	42F 3024	2.06	4.00	2	8.1
3	42F 3030	2.50	4.75	2	13.1
4	42F 3040	3.12	6.00	1	19.7

Fig. 42T 3 – Tee



Size IN	Part Number	A IN	B IN	Master	Weight LB
1/8	42T 3001	0.81	0.88	80	0.2
1/4	42T 3002	0.97	1.00	80	0.4
3/8	42T 3003	1.12	1.31	50	0.8
1/2	42T 3004	1.31	1.50	35	1.2
3/4	42T 3006	1.50	1.81	20	2.0
1	42T 3010	1.75	2.19	15	3.2
1-1/4	42T 3012	2.00	2.44	10	3.8
1-1/2	42T 3014	2.38	2.97	5	7.2
2	42T 3020	2.50	3.31	4	7.7
2-1/2	42T 3024	3.25	4.00	2	15.4
3	42T 3030	3.75	4.75	1	22.4
4	42T 3040	4.50	6.00	1	39.6

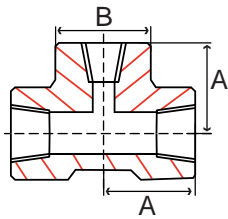


Fig. 42RT3 – Reducing Tee

Size IN	Part Number	A IN	B IN	Master	Weight LB
3/4 x 1/2	42RT3006004	1.50	1.81	20	1.8
1 x 1/2	42RT3010004	1.75	2.19	15	2.9
1 x 3/4	42RT3010006	1.75	2.19	15	2.9
1-1/4 x 1/2	42RT3012004	2.00	2.44	10	3.6
1-1/4 x 3/4	42RT3012006	2.00	2.44	10	3.6
1-1/4 x 1	42RT3012010	2.00	2.44	10	3.6
1-1/2 x 1/2	42RT3014004	2.38	2.97	5	6.8
1-1/2 x 3/4	42RT3014006	2.38	2.97	5	6.8
1-1/2 x 1	42RT3014010	2.38	2.97	5	6.8
1-1/2 x 1-1/4	42RT3014012	2.38	2.97	5	6.8
2 x 1/2	42RT3020004	2.50	3.31	4	7.0
2 x 3/4	42RT3020006	2.50	3.31	4	7.0
2 x 1	42RT3020010	2.50	3.31	4	7.0
2 x 1-1/4	42RT3020012	2.50	3.31	4	7.0
2 x 1-1/2	42RT3020014	2.50	3.31	4	7.0

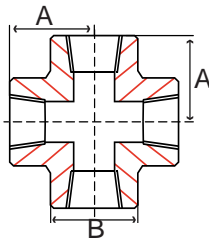


Fig. 42X 3 – Cross

Size IN	Part Number	A IN	B IN	Master	Weight LB
1/8	42X 3001	0.81	0.88	40	0.4
1/4	42X 3002	0.97	1.00	40	0.5
3/8	42X 3003	1.12	1.31	40	0.9
1/2	42X 3004	1.31	1.50	30	1.4
3/4	42X 3006	1.50	1.81	20	2.5
1	42X 3010	1.75	2.19	12	3.5
1-1/4	42X 3012	2.00	2.44	6	4.1
1-1/2	42X 3014	2.38	2.97	4	6.5
2	42X 3020	2.50	3.31	4	8.1
2-1/2	42X 3024	3.25	4.00	2	39.8
3	42X 3030	3.75	4.75	2	22.0
4	42X 3040	4.50	6.00	1	48.8

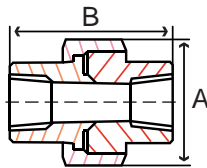
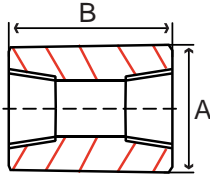


Fig. 42U 3 – Union

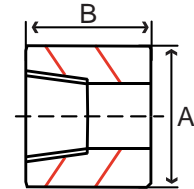
Size IN	Part Number	A IN	B IN	Master	Weight LB
1/8	42U 3001	1.48	1.66	70	0.6
1/4	42U 3002	1.48	1.66	70	0.6
3/8	42U 3003	1.66	1.83	70	0.5
1/2	42U 3004	1.93	2.00	50	0.7
3/4	42U 3006	2.38	2.31	35	1.0
1	42U 3010	2.78	2.42	20	1.6
1-1/4	42U 3012	3.35	2.86	14	2.2
1-1/2	42U 3014	3.70	3.00	10	3.5
2	42U 3020	4.42	3.50	5	5.3
2-1/2	42U 3024	5.22	4.25	3	8.0
3	42U 3030	6.15	4.42	2	11.6

Fig. 42CP3 – Coupling



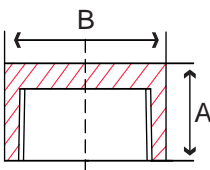
Size IN	Part Number	A IN	B IN	Master	Weight LB
1/8	42CP3001	0.62	1.25	250	0.1
1/4	42CP3002	0.75	1.38	250	0.1
3/8	42CP3003	0.88	1.50	200	0.1
1/2	42CP3004	1.12	1.88	100	0.2
3/4	42CP3006	1.33	2.00	70	0.4
1	42CP3010	1.75	2.38	35	0.9
1-1/4	42CP3012	2.25	2.62	20	1.7
1-1/2	42CP3014	2.50	3.12	15	2.3
2	42CP3020	3.00	3.38	10	3.0
2-1/2	42CP3024	3.62	3.62	5	5.0
3	42CP3030	4.25	4.25	3	7.4
4	42CP3040	5.50	4.75	2	13.8

Fig. 42HP3 – Half Coupling



Size IN	Part Number	A IN	B IN	Master	Weight LB
1/8	42HC3001	0.62	0.62	400	0.04
1/4	42HC3002	0.75	0.69	800	0.04
3/8	42HC3003	0.88	0.75	500	0.06
1/2	42HC3004	1.12	0.94	250	0.1
3/4	42HC3006	1.33	1.00	150	0.2
1	42HC3010	1.75	1.17	80	0.5
1-1/4	42HC3012	2.25	1.31	35	0.7
1-1/2	42HC3014	2.50	1.56	30	1.1
2	42HC3020	3.00	1.67	20	1.5
2-1/2	42HC3024	3.62	1.81	12	2.4
3	42HC3030	4.25	2.12	6	3.7
4	42HC3040	5.50	2.37	4	6.8

Fig. 42C 3 – Cap



Size IN	Part Number	A IN	B IN	Master	Weight LB
1/8	42C 3001	0.75	0.62	300	0.05
1/4	42C 3002	1.00	0.75	300	0.1
3/8	42C 3003	1.00	0.88	250	0.1
1/2	42C 3004	1.25	1.12	130	0.2
3/4	42C 3006	1.44	1.33	80	0.3
1	42C 3010	1.62	1.75	50	0.8
1-1/4	42C 3012	1.75	2.25	30	1.3
1-1/2	42C 3014	1.75	2.50	25	1.5
2	42C 3020	1.88	3.00	15	2.4
2-1/2	42C 3024	2.38	3.62	10	4.8
3	42C 3030	2.56	4.25	5	7.7
4	42C 3040	2.69	5.50	3	10.6

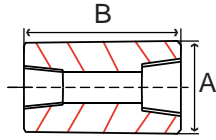
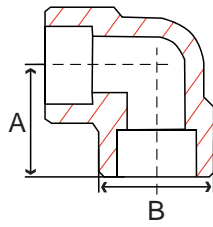


Fig. 42RC3 – Reducing Coupling

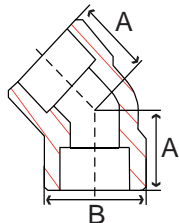
Size IN	Part Number	A IN	B IN	Master	Weight LB
1/4 x 1/8	42RC3002001	0.75	1.38	250	0.1
3/8 x 1/8	42RC3003001	0.88	1.50	200	0.1
3/8 x 1/4	42RC3003002	0.88	1.50	200	0.1
1/2 x 1/8	42RC3004001	1.12	1.88	100	0.2
1/2 x 1/4	42RC3004002	1.12	1.88	100	0.4
1/2 x 3/8	42RC3004003	1.12	1.88	100	0.2
3/4 x 1/8	42RC3006001	1.33	2.00	70	0.4
3/4 x 1/4	42RC3006002	1.33	2.00	70	0.4
3/4 x 3/8	42RC3006003	1.33	2.00	70	0.4
3/4 x 1/2	42RC3006004	1.33	2.00	70	0.4
1 x 1/8	42RC3010001	1.75	2.38	35	0.8
1 x 1/4	42RC3010002	1.75	2.38	35	0.8
1 x 3/8	42RC3010003	1.75	2.38	35	0.8
1 x 1/2	42RC3010004	1.75	2.38	35	0.8
1 x 3/4	42RC3010006	1.75	2.38	35	0.8
1-1/4 x 1/8	42RC3012001	2.25	2.62	20	1.5
1-1/4 x 1/4	42RC3012002	2.25	2.62	20	1.5
1-1/4 x 3/8	42RC3012003	2.25	2.62	20	1.5
1-1/4 x 1/2	42RC3012004	2.25	2.62	20	1.5
1-1/4 x 3/4	42RC3012006	2.25	2.62	20	1.5
1-1/4 x 1	42RC3012010	2.25	2.62	20	1.5
1-1/2 x 1/8	42RC3014001	2.50	3.12	15	2.1
1-1/2 x 1/4	42RC3014002	2.50	3.12	15	2.1
1-1/2 x 3/8	42RC3014003	2.50	3.12	15	2.1
1-1/2 x 1/2	42RC3014004	2.50	3.12	15	2.1
1-1/2 x 3/4	42RC3014006	2.50	3.12	15	2.1
1-1/2 x 1	42RC3014010	2.50	3.12	15	2.8
1-1/2 x 1-1/4	42RC3014012	2.50	3.12	15	2.1
2 x 1/8	42RC3020001	3.00	3.38	10	3.0
2 x 1/4	42RC3020002	3.00	3.38	10	3.0
2 x 3/8	42RC3020003	3.00	3.38	10	3.0
2 x 1/2	42RC3020004	3.00	3.38	10	3.0
2 x 3/4	42RC3020006	3.00	3.38	10	3.0
2 x 1	42RC3020010	3.00	3.38	10	4.5
2 x 1-1/4	42RC3020012	3.00	3.38	10	3.3
2 x 1-1/2	42RC3020014	3.00	3.38	10	3.9
2-1/2 x 1/2	42RC3024004	3.62	3.62	5	5.7
2-1/2 x 3/4	42RC3024006	3.62	3.62	5	4.5
2-1/2 x 1	42RC3024010	3.62	3.62	5	4.5
2-1/2 x 1-1/4	42RC3024012	3.62	3.62	5	4.5
2-1/2 x 1-1/2	42RC3024014	3.62	3.62	5	4.5
2-1/2 x 2	42RC3024020	3.62	3.62	5	4.5
3 x 3/4	42RC3030006	4.25	4.25	3	6.7
3 x 1	42RC3030010	4.25	4.25	3	6.7
3 x 1-1/4	42RC3030012	4.25	4.25	3	6.7
3 x 1-1/2	42RC3030014	4.25	4.25	3	6.7
3 x 2	42RC3030020	4.25	4.25	3	6.7
3 x 2-1/2	42RC3030024	4.25	4.25	3	6.7
4 x 1-1/2	42RC3040014	5.50	4.75	2	11.9
4 x 2	42RC3040020	5.50	4.75	2	11.9
4 x 2-1/2	42RC3040024	5.50	4.75	2	11.9
4 x 3	42RC3040030	5.50	4.75	2	11.9

Fig. 52E 3 – 90° Elbow



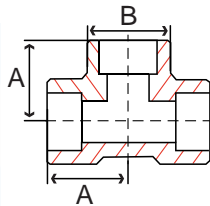
Size IN	Part Number	A IN	B IN	Master	Weight LB
1/8	52E 3001	0.82	0.68	150	0.2
1/4	52E 3002	0.82	0.82	150	0.3
3/8	52E 3003	0.91	0.98	100	0.2
1/2	52E 3004	1.00	1.20	80	0.4
3/4	52E 3006	1.25	1.41	50	0.7
1	52E 3010	1.38	1.74	30	1.1
1-1/4	52E 3012	1.56	2.10	20	1.8
1-1/2	52E 3014	1.75	2.36	15	2.3
2	52E 3020	2.12	2.89	8	3.7
2-1/2	52E 3024	2.24	3.54	4	7.0
3	52E 3030	2.87	4.21	2	11.8
4	52E 3040	3.37	5.30	1	24.1

Fig. 52F 3 – 45° Elbow



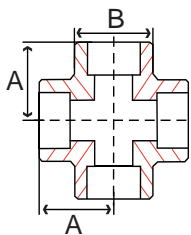
Size IN	Part Number	A IN	B IN	Master	Weight LB
1/8	52F 3001	0.69	0.68	150	0.3
1/4	52F 3002	0.69	0.82	150	0.3
3/8	52F 3003	0.69	0.98	100	0.2
1/2	52F 3004	0.82	1.20	80	0.4
3/4	52F 3006	1.00	1.41	50	0.6
1	52F 3010	1.06	1.74	30	0.9
1-1/4	52F 3012	1.19	2.10	20	1.5
1-1/2	52F 3014	1.31	2.36	15	1.7
2	52F 3020	1.62	2.89	10	2.9
2-1/2	52F 3024	1.74	3.54	6	5.5
3	52F 3030	1.87	4.21	2	11.2
4	52F 3040	2.37	5.30	1	20.7

Fig. 52T 3 – Tee



Size IN	Part Number	A IN	B IN	Master	Weight LB
1/8	52T 3001	0.82	0.68	100	0.2
1/4	52T 3002	0.82	0.82	100	0.1
3/8	52T 3003	0.91	0.98	80	0.3
1/2	52T 3004	1.00	1.20	50	0.6
3/4	52T 3006	1.25	1.41	35	0.9
1	52T 3010	1.38	1.74	20	1.4
1-1/4	52T 3012	1.56	2.10	15	2.2
1-1/2	52T 3014	1.75	2.36	10	2.9
2	52T 3020	2.12	2.89	6	4.4
2-1/2	52T 3024	2.24	3.54	3	8.7
3	52T 3030	2.87	4.21	2	13.0
4	52T 3040	3.37	5.30	1	39.4

Fig. 52X 3 – Cross



Size IN	Part Number	A IN	B IN	Master	Weight LB
1/4	52X 3002	0.82	0.82	60	1.1
3/8	52X 3003	0.91	0.98	60	1.0
1/2	52X 3004	1.00	1.20	40	0.8
3/4	52X 3006	1.25	1.41	30	1.0
1	52X 3010	1.38	1.74	20	1.6
1-1/4	52X 3012	1.56	2.10	10	2.6
1-1/2	52X 3014	1.75	2.36	6	3.5
2	52X 3020	2.12	2.89	4	5.1
2-1/2	52X 3024	2.24	3.54	3	13.3
3	52X 3030	2.87	4.21	2	13.5
4	52X 3040	3.37	5.30	1	39.0

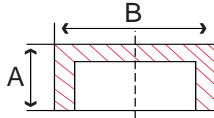


Fig. 52C 3 – Cap

Size IN	Part Number	A IN	B IN	Master	Weight LB
1/4	52C 3002	0.71	0.87	300	0.1
3/8	52C 3003	0.77	1.03	250	0.1
1/2	52C 3004	0.90	1.27	130	0.2
3/4	52C 3006	1.02	1.50	80	0.3
1	52C 3010	1.07	1.80	50	0.5
1-1/4	52C 3012	1.22	2.23	30	0.9
1-1/2	52C 3014	1.29	2.55	25	1.3
2	52C 3020	1.53	2.96	15	2.1
2-1/2	52C 3024	1.65	3.64	10	3.1
3	52C 3030	1.77	4.27	5	6.0
4	52C 3040	1.91	5.40	3	9.3

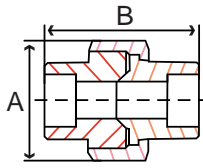


Fig. 52U 3 – Union

Size IN	Part Number	A IN	B IN	Master	Weight LB
1/8	52U 3001	1.66	1.48	70	0.6
1/4	52U 3002	1.66	1.48	70	0.6
3/8	52U 3003	1.83	1.66	70	0.5
1/2	52U 3004	2.00	1.93	50	1.0
3/4	52U 3006	2.31	2.38	35	1.0
1	52U 3010	2.42	2.78	20	1.6
1-1/4	52U 3012	2.86	3.35	14	2.4
1-1/2	52U 3014	3.00	3.70	10	3.5
2	52U 3020	3.50	4.42	5	4.7
2-1/2	52U 3024	4.25	5.22	3	7.7
3	52U 3030	4.42	6.15	2	11.3

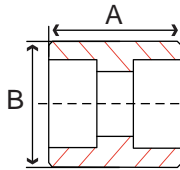
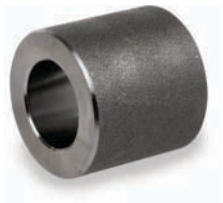


Fig. 52CP3 – Coupling

Size IN	Part Number	A IN	B IN	Master	Weight LB
1/8	52CP3001	1.01	0.97	350	0.1
1/4	52CP3002	1.01	0.87	350	0.1
3/8	52CP3003	1.01	1.03	250	0.1
1/2	52CP3004	1.14	1.27	120	0.2
3/4	52CP3006	1.38	1.50	80	0.3
1	52CP3010	1.50	1.80	50	0.6
1-1/4	52CP3012	1.50	2.23	30	0.9
1-1/2	52CP3014	1.50	2.55	25	1.3
2	52CP3020	2.00	2.96	15	1.8
2-1/2	52CP3024	2.00	3.64	10	3.0
3	52CP3030	2.00	4.27	6	3.9
4	52CP3040	2.25	5.40	4	6.2

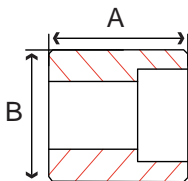


Fig. 52HC3 – Half Coupling

Size IN	Part Number	A IN	B IN	Master	Weight LB
1/2	52HC3004	1.26	1.27	150	0.2
3/4	52HC3006	1.44	1.50	80	0.4
1	52HC3010	1.62	1.80	50	0.6
1-1/4	52HC3012	1.69	2.23	30	0.7
1-1/2	52HC3014	1.75	2.55	25	1.4
2	52HC3020	2.24	2.96	15	2.4
2-1/2	52HC3024	2.31	3.64	10	3.5
3	52HC3030	2.37	4.27	6	4.6
4	52HC3040	2.63	5.40	4	8.1

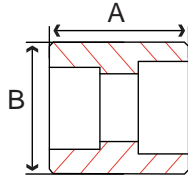
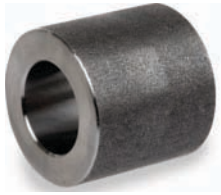


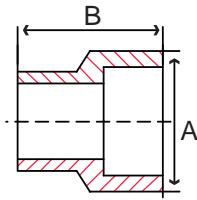
Fig. 52RC3 – Reducing Coupling

Size IN	Part Number	A IN	B IN	Master	Weight LB
1/2 x 1/4	52RC3004002	1.14	1.27	120	0.2
1/2 x 3/8	52RC3004003	1.14	1.27	120	0.2
3/4 x 1/8	52RC3006001	1.38	1.50	80	0.4
3/4 x 1/4	52RC3006002	1.38	1.50	80	0.4
3/4 x 3/8	52RC3006003	1.38	1.50	80	0.4
3/4 x 1/2	52RC3006004	1.38	1.50	80	0.4
1 x 1/4	52RC3010002	1.50	1.80	50	0.5
1 x 3/8	52RC3010003	1.50	1.80	50	0.5
1 x 1/2	52RC3010004	1.50	1.80	50	0.5
1 x 3/4	52RC3010006	1.50	1.80	50	0.5
1-1/4 x 1/2	52RC3012004	1.50	2.23	30	1.0
1-1/4 x 3/4	52RC3012006	1.50	2.23	30	1.1
1-1/4 x 1	52RC3012010	1.50	2.23	30	1.0
1-1/2 x 1/4	52RC3014002	1.50	2.55	25	1.3
1-1/2 x 3/8	52RC3014003	1.50	2.55	25	2.0
1-1/2 x 1/2	52RC3014004	1.50	2.55	25	1.3
1-1/2 x 3/4	52RC3014006	1.50	2.55	25	1.3
1-1/2 x 1	52RC3014010	1.50	2.55	25	1.6
1-1/2 x 1-1/4	52RC3014012	1.50	2.55	25	1.3
2 x 1/4	52RC3020002	2.00	2.96	15	2.6
2 x 3/8	52RC3020003	2.00	2.96	15	2.2
2 x 1/2	52RC3020004	2.00	2.96	15	2.6
2 x 3/4	52RC3020006	2.00	2.96	15	2.3
2 x 1	52RC3020010	2.00	2.96	15	2.1
2 x 1-1/4	52RC3020012	2.00	2.96	15	2.1
2 x 1-1/2	52RC3020014	2.00	2.96	15	2.6
2-1/2 x 1/2	52RC3024004	2.00	3.64	10	4.2
2-1/2 x 3/4	52RC3024006	2.00	3.64	10	3.5
2-1/2 x 1	52RC3024010	2.00	3.64	10	3.1
2-1/2 x 1-1/4	52RC3024012	2.00	3.64	10	3.1
2-1/2 x 1-1/2	52RC3024014	2.00	3.64	10	3.1
2-1/2 x 2	52RC3024020	2.00	3.64	10	3.1
3 x 1	52RC3030010	2.00	4.27	6	4.1
3 x 1-1/4	52RC3030012	2.00	4.27	6	4.4
3 x 1-1/2	52RC3030014	2.00	4.27	6	4.1
3 x 2	52RC3030020	2.00	4.27	6	4.1
3 x 2-1/2	52RC3030024	2.00	4.27	6	4.1
4 x 1-1/2	52RC3040014	2.25	5.40	4	6.0
4 x 2	52RC3040020	2.25	5.40	4	5.9
4 x 2-1/2	52RC3040024	2.25	5.40	4	5.8
4 x 3	52RC3040030	2.25	5.40	4	5.7

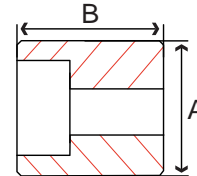
Fig. 52IN3 – Insert Fitting



Type 1

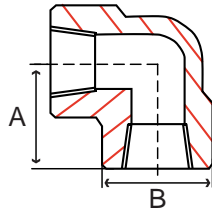


Type 2



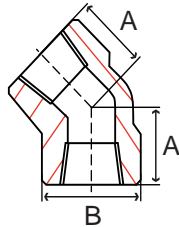
Size IN	Part Number	A IN	B IN	Type	Master	Weight LB
1/2 x 1/4	52IN3004002	1.25	1.23	1	150	0.2
1/2 x 3/8	52IN3004003	1.25	1.23	1	150	0.2
3/4 x 1/4	52IN3006002	1.06	1.46	1	100	0.3
3/4 x 3/8	52IN3006003	1.06	1.46	2	100	0.3
3/4 x 1/2	52IN3006004	1.34	1.46	2	100	0.3
1 x 1/4	52IN3010002	1.12	1.78	2	80	0.5
1 x 3/8	52IN3010003	1.12	1.78	2	80	0.5
1 x 1/2	52IN3010004	1.12	1.78	2	80	0.3
1 x 3/4	52IN3010006	1.52	1.78	1	80	0.5
1-1/4 x 1/4	52IN3012002	1.25	2.16	2	70	0.9
1-1/4 x 3/8	52IN3012003	1.25	2.16	2	70	0.9
1-1/4 x 1/2	52IN3012004	1.25	2.16	2	70	0.9
1-1/4 x 3/4	52IN3012006	1.25	2.16	2	70	0.9
1-1/4 x 1	52IN3012010	1.58	2.16	1	70	0.9
1-1/2 x 3/8	52IN3014003	1.31	2.42	2	50	1.2
1-1/2 x 1/2	52IN3014004	1.31	2.42	2	50	0.9
1-1/2 x 3/4	52IN3014006	1.31	2.42	2	50	1.2
1-1/2 x 1	52IN3014010	1.31	2.42	2	50	0.6
1-1/2 x 1-1/4	52IN3014012	1.70	2.42	1	50	1.2
2 x 1/2	52IN3020004	1.50	2.96	2	25	1.9
2 x 3/4	52IN3020006	1.50	2.96	2	25	1.9
2 x 1	52IN3020010	1.50	2.96	2	25	1.9
2 x 1-1/4	52IN3020012	1.50	2.96	2	25	1.9
2 x 1-1/2	52IN3020014	1.81	2.96	1	25	1.9
2-1/2 x 1/2	52IN3024004	2.12	3.70	2	12	2.6
2-1/2 x 3/4	52IN3024006	2.12	3.70	2	12	2.6
2-1/2 x 1	52IN3024010	2.12	3.70	2	12	2.6
2-1/2 x 1-1/4	52IN3024012	2.12	3.70	2	12	2.6
2-1/2 x 1-1/2	52IN3024014	2.12	3.70	2	12	2.6
2-1/2 x 2	52IN3024020	2.50	3.70	1	12	2.6
3 x 1	52IN3030010	1.87	4.30	2	10	3.9
3 x 1-1/4	52IN3030012	1.87	4.30	2	10	3.9
3 x 1-1/2	52IN3030014	1.87	4.30	2	10	4.1
3 x 2	52IN3030020	2.00	4.30	2	6	4.1
4 x 2-1/2	52IN3040024	2.25	5.39	2	4	5.8

Fig. 42E 6 – 90° Elbow



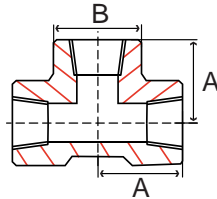
Size IN	Part Number	A IN	B IN	Master	Weight LB
1/2	42E 6004	1.50	1.81	25	1.7
3/4	42E 6006	1.75	2.19	20	2.8
1	42E 6010	2.00	2.44	12	3.5
1-1/4	42E 6012	2.38	2.97	5	6.4
1-1/2	42E 6014	2.50	3.31	4	8.3
2	42E 6020	3.25	4.00	2	16.1
3	42E 6030	4.13	5.69	-	36.2

Fig. 42F 6 – 45° Elbow



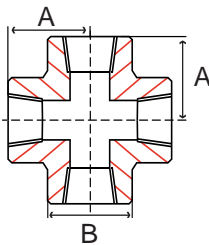
Size IN	Part Number	A IN	B IN	Master	Weight LB
1/2	42F 6004	1.12	1.81	25	1.3
3/4	42F 6006	1.31	2.19	20	2.3
1	42F 6010	1.38	2.44	12	2.7
1-1/4	42F 6012	1.69	2.97	5	4.9
1-1/2	42F 6014	1.72	3.31	4	5.5
2	42F 6020	2.06	4.00	2	9.6
2-1/2	42F 6024	2.50	4.72	-	15.4

Fig. 42T 6 – Tee



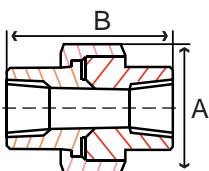
Size IN	Part Number	A IN	B IN	Master	Weight LB
3/8	42T 6003	1.29	1.48	35	1.3
1/2	42T 6004	1.50	1.81	20	2.1
3/4	42T 6006	1.75	2.19	12	3.6
1	42T 6010	2.00	2.44	10	4.7
1-1/4	42T 6012	2.38	2.97	2	7.6
1-1/2	42T 6014	2.50	3.31	2	10.3
2	42T 6020	3.25	4.00	2	17.3
2-1/2	42T 6024	3.71	4.72	1	28.8
3	42T 6030	4.13	5.70	1	49.5

Fig. 42X 6 – Cross



Size IN	Part Number	A IN	B IN	Master	Weight LB
1/2	42X 6004	1.50	1.81	20	2.2
3/4	42X 6006	1.75	2.19	12	3.6
1	42X 6010	2.00	2.44	6	3.8
1-1/4	42X 6012	2.38	2.97	4	8.8
2	42X 6020	3.25	4.00	1	19.8
2-1/2	42X 6024	3.71	4.72	-	33.0

Fig. 42U 6 – Union



Size IN	Part Number	A IN	B IN	Master	Weight LB
1-1/2	42U 6014	3.50	4.42	6	4.89
2	42U 6020	4.12	5.23	2	8.37

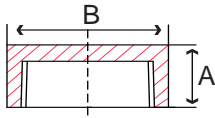


Fig. 42C 6 – Cap

Size IN	Part Number	A IN	B IN	Master	Weight LB
1/4	42C 6002	1.06	1.00	200	0.13
3/8	42C 6003	1.06	1.25	150	0.19
1/2	42C 6004	1.31	1.50	80	0.57
3/4	42C 6006	1.50	1.75	50	0.88
1	42C 6010	1.69	2.25	35	1.56
1-1/4	42C 6012	1.81	2.50	20	1.30
1-1/2	42C 6014	1.88	3.00	15	1.69
2	42C 6020	2.00	3.62	8	4.91

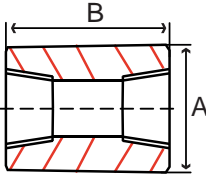


Fig. 42CP6 – Coupling

Size IN	Part Number	A IN	B IN	Master	Weight LB
1/8	42CP6001	0.88	1.25	200	0.17
1/4	42CP6002	1.00	1.38	200	0.28
3/8	42CP6003	1.25	1.50	100	0.28
1/2	42CP6004	1.50	1.88	80	0.74
3/4	42CP6006	1.75	2.00	35	1.10
1	42CP6010	2.25	2.38	20	1.91
1-1/4	42CP6012	2.50	2.62	15	2.40
1-1/2	42CP6014	3.00	3.12	10	4.27
2	42CP6020	3.62	3.38	5	6.32

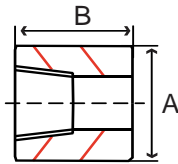


Fig. 42HC6 – Half Coupling

Size IN	Part Number	A IN	B IN	Master	Weight LB
1/2	42HC6004	1.50	0.94	50	0.35
1	42HC6010	2.25	1.19	25	0.99
1-1/2	42HC6014	3.00	1.56	10	2.11
2	42HC6020	3.62	1.69	10	3.88
2-1/2	42HC6024				
3	42HC6030				

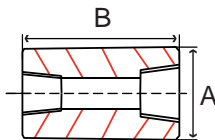


Fig. 42RC6 – Reducing Coupling

Size IN	Part Number	A IN	B IN	Master	Weight LB
1-1/2 x 1/2	42RC6014004	3.00	3.12	10	2.64
1-1/2 x 3/4	42RC6014006	3.00	3.12	10	4.12
1-1/2 x 1	42RC6014010	3.00	3.12	10	2.18
2 x 1/2	42RC6020004	3.62	3.38	5	9.25
2 x 1	42RC6020010	3.62	3.38	5	7.49
2 x 1-1/2	42RC6020014	3.62	3.38	5	7.49

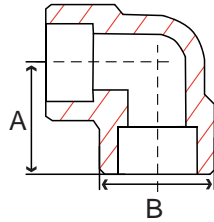


Fig. 52E 6 – 90° Elbow

Size IN	Part Number	A IN	B IN	Master	Weight LB
1/2	52E 6004	1.13	1.33	50	0.8
3/4	52E 6006	1.38	1.62	25	1.6
1	52E 6010	1.56	1.96	20	2.5
1-1/4	52E 6012	1.75	2.31	15	3.2
1-1/2	52E 6014	2.00	2.62	6	6.1
2	52E 6020	2.24	3.27	5	7.2

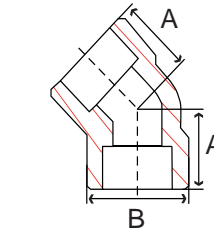


Fig. 52F 6 – 45° Elbow

Size IN	Part Number	A IN	B IN	Master	Weight LB
1/2	52F 6004	0.88	1.33	50	0.7
3/4	52F 6006	1.06	1.62	30	1.2
1	52F 6010	1.19	1.96	20	2.0
1-1/4	52F 6012	1.31	2.31	15	2.4
1-1/2	52F 6014	1.50	2.62	8	4.4
2	52F 6020	1.74	3.27	6	4.6

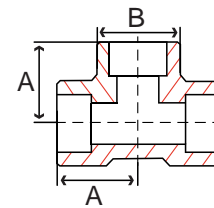


Fig. 52T 6 – Tee

Size IN	Part Number	A IN	B IN	Master	Weight LB
1/2	52T 6004	1.13	1.33	35	1.2
3/4	52T 6006	1.38	1.62	20	2.0
1	52T 6010	1.56	1.96	15	4.7
1-1/4	52T 6012	1.75	2.31	10	4.2
1-1/2	52T 6014	2.00	2.62	5	7.4
2	52T 6020	2.24	3.27	4	8.7

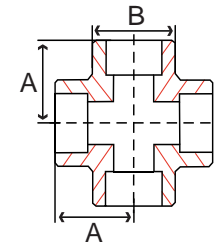


Fig. 52X 6 – Cross

Size IN	Part Number	A IN	B IN	Master	Weight LB
1/2	52X 6004	1.13	1.33	30	1.6
3/4	52X 6006	1.38	1.62	20	2.3
1	52X 6010	1.56	1.96	12	3.9
1-1/2	52X 6014	2.00	2.62	4	8.3
2	52X 6020	2.24	3.27	2	15.8

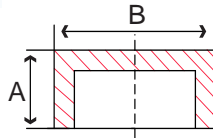


Fig. 52C 6 – Cap

Size IN	Part Number	A IN	B IN	Master	Weight LB
1/2	52C 6004	0.81	1.33	80	0.3
3/4	52C 6006	0.81	1.62	50	0.5
1	52C 6010	0.94	1.96	35	0.7
1-1/4	52C 6012	0.94	2.31	25	1.4
1-1/2	52C 6014	1.00	2.62	15	2.0
2	52C 6020	1.19	3.27	8	3.6

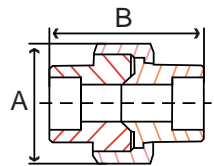


Fig. 52U 6 – Union

Size IN	Part Number	A IN	B IN	Master	Weight LB
1/2	52U 6004	2.25	2.38	30	1.0
3/4	52U 6006	2.44	2.75	20	1.0
1	52U 6010	2.88	3.25	10	1.5
1-1/4	52U 6012	3.00	3.50	8	6.5
1-1/2	52U 6014	3.38	4.25	6	4.8
2	52U 6020	4.06	5.12	2	4.8

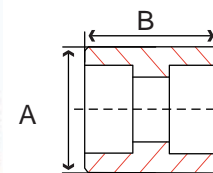


Fig. 52CP6 – Coupling

Size IN	Part Number	A IN	B IN	Master	Weight LB
1/2	52CP6004	1.14	1.33	30	0.5
3/4	52CP6006	1.38	1.62	20	0.5
1	52CP6010	1.50	1.96	10	0.9
1-1/4	52CP6012	1.50	2.31	8	1.3
1-1/2	52CP6014	1.50	2.62	6	2.4
2	52CP6020	2.00	3.27	2	3.5

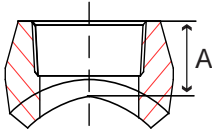
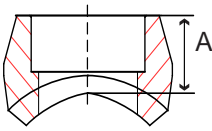


Fig. 43T03 – Threaded Outlet

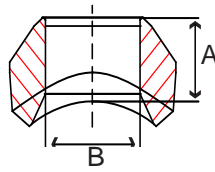
Size IN	Part Number	A IN	Master	Weight LB
1/4 x 3/8 thru 36	43TO3002003360	0.75	200	.02
1/2 x 3/4 thru 36	43TO3004006360	1.00	150	0.2
3/4 x 1 thru 1-1/4	43TO3006010012	1.06	100	0.2
3/4 x 1-1/2 thru 36	43TO3006014360	1.06	100	0.2
1 x 1-1/4 thru 2-1/2	43TO3010012024	1.31	50	0.5
1 x 3 thru 36	43TO3010030360	1.31	50	0.5
1-1/4 x 1-1/2	43TO3012010004	1.31	40	0.8
1-1/4 x 2 thru 3-1/2	43TO3012020034	1.31	40	0.8
1-1/4 x 4 thru 36	43TO3012040360	1.31	40	0.8
1-1/2 x 2 thru 2-1/2	43TO3014020024	1.38	25	1.0
1-1/2 x 3 thru 5	43TO3014030050	1.38	25	1.0
1-1/2 x 6 thru 36	43TO3014060360	1.38	25	1.0
2 x 2-1/2 thru 3-1/2	43TO3020024034	1.50	10	1.7
2 x 4 thru 6	43TO3020040060	1.50	15	1.7
2 x 8 thru 36	43TO3020080360	1.50	15	1.7
2-1/2 x 3 thru 3-1/2	43TO3024030034	1.81	10	2.5
2-1/2 x 4 thru 5	43TO3024040050	1.81	10	2.5
2-1/2 x 6 thru 8	43TO3024060080	1.81	10	2.5
2-1/2 x 10 thru 36	43TO3024100360	1.81	10	2.5
3 x 3-1/2 thru 4	43TO3030034040	2.00	6	4.0
3 x 5 thru 6	43TO3030050060	2.00	6	4.0
3 x 8 thru 14	43TO3030080140	2.00	6	4.0
3 x 16 thru 36	43TO3030160360	2.00	6	4.0
4 x 5 thru 6	43TO3040050060	2.25	3	6.3
4 x 8 thru 10	43TO3040080100	2.25	3	6.3
4 x 12 thru 20	43TO3040120200	2.25	3	6.3
4 x 22 thru 36	43TO3040220360	2.25	3	6.3

Fig. 43S03 – Socket Weld Outlet



Size IN	Part Number	A IN	Master	Weight LB
1/2 x 3/4 thru 36	43SO3004006360	1.01	150	0.2
3/4 x 1 thru 1-1/4	43SO3006010012	1.13	100	0.2
3/4 x 1-1/2 thru 36	43SO3006014360	1.13	100	0.2
1 x 1-1/4 thru 2-1/2	43SO3010012024	1.38	50	0.5
1 x 3 thru 36	43SO3010030360	1.38	50	0.5
1-1/4 x 1-1/2	43SO3012010004	1.38	40	0.8
1-1/4 x 2 thru 3-1/2	43SO3012020034	1.38	40	0.8
1-1/4 x 4 thru 36	43SO3012040360	1.38	40	0.8
1-1/2 x 2 thru 2-1/2	43SO3014020024	1.44	25	1.0
1-1/2 x 3 thru 5	43SO3014030050	1.44	25	1.0
1-1/2 x 6 thru 36	43SO3014060360	1.44	25	1.0
2 x 2-1/2 thru 3-1/2	43SO3020024034	1.56	10	1.7
2 x 4 thru 6	43SO3020040060	1.56	15	1.7
2 x 8 thru 36	43SO3020080360	1.56	15	1.7
2-1/2 x 3 thru 3-1/2	43SO3024030034	1.62	10	2.5
2-1/2 x 4 thru 5	43SO3024040050	1.62	10	2.5
2-1/2 x 6 thru 8	43SO3024060080	1.62	10	2.5
2-1/2 x 10 thru 36	43SO3024100360	1.62	10	2.5
3 x 3-1/2 thru 4	43SO3030034040	1.81	6	4.0
3 x 5 thru 6	43SO3030050060	1.81	6	4.0
3 x 8 thru 14	43SO3030080140	1.81	6	4.0
3 x 16 thru 36	43SO3030160360	1.81	6	4.0
4 x 5 thru 6	43SO3040050060	1.94	1	6.3
4 x 8 thru 10	43SO3040080100	1.94	1	6.3
4 x 12 thru 20	43SO3040120200	1.94	1	6.3
4 x 22 thru 36	43SO3040220360	1.94	1	6.3

Fig. 43W03 – Welded Outlet



Size IN	Part Number	A IN	B IN	Master	Weight LB
1/2 x 1	43WO3004010	0.75	0.545	150	0.3
1/2 x 1-1/4 thru 36	43WO3004012360	0.75	0.545	150	0.3
3/4 x 1 thru 2	43WO3006010020	0.88	0.743	100	0.3
3/4 x 2-1/2 thru 36	43WO3006024360	0.88	0.743	100	0.3
1 x 1-1/4 thru 1-1/2	43WO3010012014	1.06	0.957	50	0.6
1 x 2 thru 36	43WO3010020360	1.06	0.957	50	0.6
1-1/4 x 1-1/2 thru 2	43WO3012014020	1.25	1.280	40	0.9
1-1/4 x 2-1/2 thru 6	43WO3012024060	1.25	1.280	40	0.9
1-1/4 x 8 thru 36	43WO3012080360	1.25	1.280	40	0.9
1-1/2 x 2 thru 3-1/2	43WO3014020034	1.31	1.502	25	1.4
1-1/2 x 4 thru 36	43WO3014040360	1.31	1.502	25	1.4
2 x 2-1/2 thru 3	43WO3020024030	1.50	1.938	15	2.3
2 x 3-1/2 thru 6	43WO3020034060	1.50	1.938	15	2.3
2 x 8 thru 36	43WO3020080360	1.50	1.938	15	2.3
2-1/2 x 5 thru 10	43WO3024050100	1.62	2.322	10	2.9
2-1/2 x 12 thru 36	43WO3024120360	1.62	2.322	10	2.3
3 x 5 thru 6	43WO3030050060	1.75	2.900	6	4.3
3 x 8 thru 14	43WO3030080140	1.75	2.900	6	4.3
3 x 16 thru 36	43WO3030160360	1.75	2.900	6	4.3
4 x 8 thru 10	43WO3040080100	2.00	3.826	3	7.1
4 x 12 thru 20	43WO3040120200	2.00	3.826	3	7.1
4 x 22 thru 36	43WO3040220360	2.00	3.826	3	7.1

All Butt Weld Outlets Have a Schedule 80 Bore